



Whitley Park Primary and Nursery School Provision for Remote Education

Remote Education Provision – Information for parents

This information is intended to provide clarity and transparency to pupils and parents or carers about what to expect from remote education where national or local restrictions require entire cohorts (or bubbles) to remain at home. For details of what to expect where individual pupils are self-isolating, please see the final section of this page.

Remote Education Provision

We are committed to ensuring that any period of remote learning enables every pupil to continue their learning and make progress. All pupils have a Google Classroom account and this is our primary platform for learning. If required to partially close, remote learning will be provided daily. We encourage and support every child to access this provision. In exceptional circumstances, we also provide short term arrangements, including work packs and resources to get children started and ensure no time is lost.

What should my child expect from immediate remote education in the first day or two of pupils being sent home?

Your child should log on to their Google Classroom where work will be published daily. Every class has a set remote timetable which will be shared with children and families in advance. Tasks will be created on line with an expectation these are submitted daily. Staff will contact all families to ensure they are set up and work through any access barriers.

To supplement Google Classroom, your child also has a log in for Timestable Rockstars where they should practise their times tables and a log in to Reading Planet where they will access an e-book with comprehension activities.

If you need support or guidance, you can email your child's class teacher using the year group email addresses.

Following the first few days of remote education, will my child be taught broadly the same curriculum as they would if they were in school?

We will be following the same curriculum content remotely as we do in school. Some tasks may be adapted to make the learning more accessible from home. For example, science lessons will be adapted depending on the equipment needed for any science experiments and PE lessons at home will be adapted to consider available space.

Remote teaching and studying time each day – How long can I expect work set by the school to take my child each day?

We expect that remote education (including remote teaching and independent work) will take pupils broadly the following number of hours each day:

Early Years	There is no statutory expectation for Early Year but we would encourage you to do minimum of 1 hour a day for Nursery children and Reception children we will provide enough work for a minimum of 2 hours a day.
Key Stage 1	3 hours per day
Key Stage 2	4 hours per day

Accessing remote education – How will my child access any online remote education you are providing?

You child has a Google Classroom log in and all remote learning will be accessed via their account. These details will be sent home with your child. You can also email the class teacher via the year group email to get a copy of the log-in.

If my child does not have digital or online access at home, how will you support them to access remote education?

We recognise that some pupils may not have suitable online access at home. We will take the following approaches to support those pupils to access remote education:

- ❖ As a priority, we will loan laptops to those children whose families were identified in the November 2020 'Remote Learning Online Access Parent Survey' as not having any devices for online learning.
- ❖ You can email the school office or your child's year group email to request the loan of a laptop or support with data/Wi-Fi.
- ❖ Class teachers will identify families in need of a laptop/technical support.
- ❖ Support with identified families with an internet connection solution (4G wireless router or Vodafone Sim cards with 30GB for 90days.)
- ❖ Pupils who have do not have online access will be asked to email photographs of their work to their class teacher.

How will my child be taught remotely?

Children will receive a full, broad and balanced curriculum offer. This will be routinely structured, including a daily timetable with a morning focus on the core subjects; reading, writing and maths. We will follow our long term plans/curriculum overviews to ensure learning over time follows the normal school topic sequence. One way class teachers will be teaching is via daily pre-recorded videos to ensure the teaching is progressive and sequenced from the previous days learning.

We will use a variety of approaches to teach pupils remotely: These will include:

- Pre-recorded video or audio lessons from the class teacher. This may also include materials from other recognised websites, such as Oak Academy and White Rose.
- Live lessons as appropriate
- Live Google Meet sessions once a week in small groups
- Links to online resources/apps, e.g. - Rising Stars Reading Planet, Times Table Rock Stars, RWI phonics videos, Rocksteady Friday music lessons
- Quizzes to support rapid recall and acquisition of knowledge
- Educational Websites such as CBeebies in Early Years
- Activities to support positive mental ealth andwell-being
- Promotion of regular exercise to maintain their fitness

Engagement and feedback - What are your expectations for my child’s engagement and the support that we as parents and carers should provide at home?

Our expectations for pupils’ engagement with remote education are:-

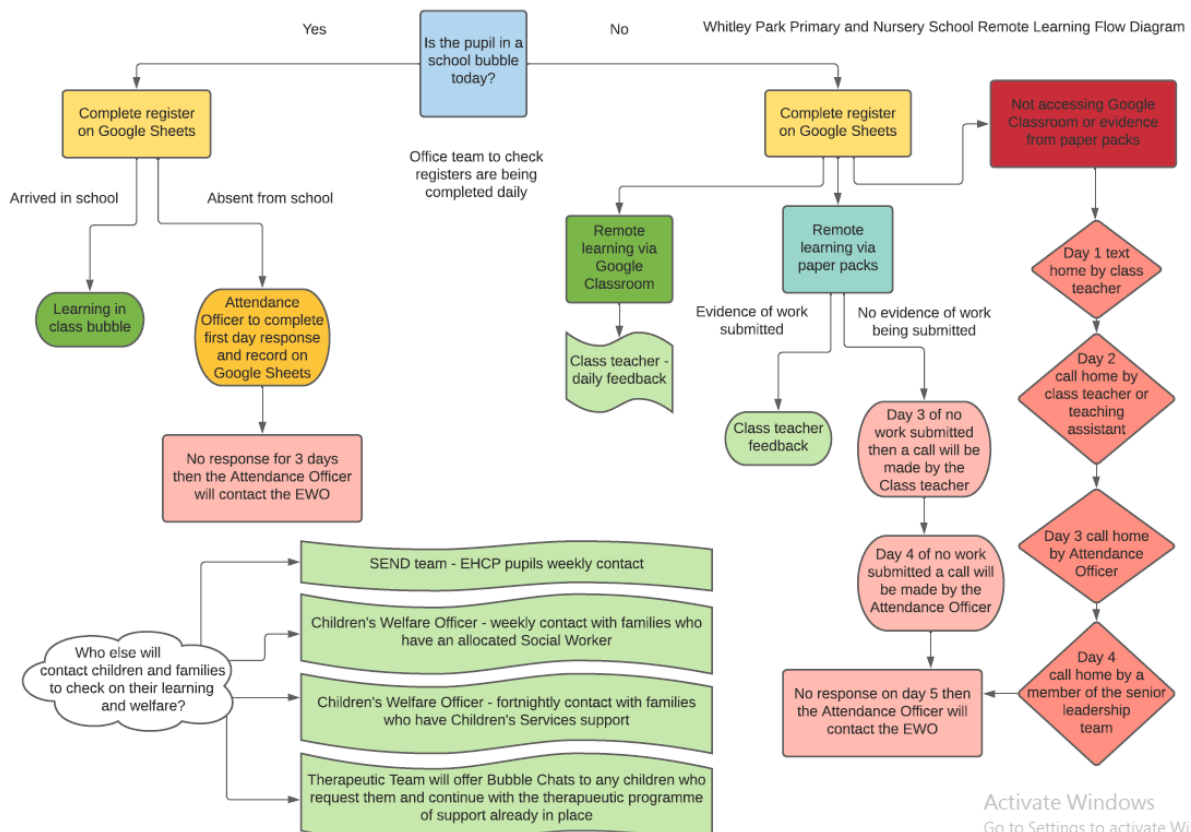
- ✓ Find a quiet place to access my remote learning.
- ✓ Be ready to learn from 8:45am- 3:15pm
- ✓ Complete all work that your teacher has set for you, to the best of your ability
- ✓ Ask your teacher or teaching assistants for help if you need it
- ✓ Alert the teacher through Google Classroom if you are not able to complete work
- ✓ Act appropriately to stay safe online and follow the school’s online safety guidance
- ✓ Remember class rules and expectations still apply and always follow the school behaviour policy
- ✓ When engaging in any live session agree to follow Google Meet rules and expectations.

Our expectations of parental support include:-

- ❖ School may need to contact my child or me during school hours
- ❖ Set routines at home that will support my child’s education
- ❖ Support your child to access home learning through Google Classroom
- ❖ Make the school aware by 9.30am if your child is sick and cannot complete their remote learning
- ❖ Ensure that your child is following the daily remote learning timetable and completing all their work
- ❖ Let the school know immediately if your child has any technical issues when accessing the online learning.
- ❖ Seek help from teachers or the school via year group emails or by contacting the school office.
- ❖ Be respectful when communicating with school staff
- ❖ Ensure that your child has appropriate parental controls on all devices
- ❖ Your child must not record, store, or distribute video or audio material without permission.

How will you check whether my child is engaging with their work and how will I be informed if there are concerns

Class teachers will check pupil’s engagement in Google Classrooms daily. Here is a flow diagram which identifies the steps we will take when a child is not accessing their remote learning.



How will you assess my child's work and progress?

Feedback can take many forms and may not always mean extensive written comments for individual children. For example, whole-class feedback or quizzes marked automatically via digital platforms are also valid and effective methods, amongst many others. Our approach to feeding back on pupil work is as follows:

- ❖ Pupils will submit work via Google Classrooms or Year group emails.
- ❖ If children are accessing work on Google Classroom but are failing to submit any work for feedback then teachers will offer children assistance.
- ❖ Feedback will be age appropriate.
- ❖ Feedback will be given within 24 hours of work being submitted.
- ❖ Feedback may be through self- marking.
- ❖ Teachers will schedule answers to questions to be submitted on google classroom.
- ❖ Feedback comments may be audio. E.g. Mote voice recording
- ❖ Challenge questions
- ❖ Individual comments
- ❖ Return all function
- ❖ A feedback slot via a 1-2 minute video that will include:
 - ✓ 3 or 4 pupil shout outs for something great
 - ✓ 2-3 things to work on, possibly including another quick model or instruction

Teachers are not expected to mark all work for all children. Teachers will aim to give 5/6 children a day quality feedback. This feedback may be: generic feedback- acknowledgement of their hard work and a best bit **or** specific to a subject e.g. writing conference feedback. Feedback may not be directly from your child's class teacher but will be from someone in the year group.

Year group email and Google Classroom comment queries 24 hours if related to any remote learning all other queries 72 hours

Additional support for pupils with particular needs - How will you work with me to help my child who needs additional support from adults at home to access remote education?

We recognise that some pupils, for example, those with special educational needs and disabilities (SEND), may not be able to access remote education without support from adults at home. We acknowledge the difficulties this may place on families, and we will work with parents and carers to support these pupils in the following ways:

- Class teachers will make regular phone calls home to offer guidance and support with learning.
- The SEND team will offer phone calls to support with learning and to signpost for additional support where needed e.g.:- dyslexia research trust or making a referral to other agencies.
- Where possible, we will provide you with the physical resources you may need for example like a sloping board and a toolkit for learning.
- We will offer bespoke work packs for SEND children, which may include speech and language resources.
- We will ensure that specific work and resources are linked to your child's Individual Learning Plan
- Other resources we can support with are visual timetables, social stories, memory games and fine motor skill activities.

Remote education for self-isolating pupils – If my child is not in school because they are self-isolating, how their remote education will differ from the approaches described above.

Where individual pupils need to self-isolate but the majority of their peer group remains in school, how remote education is provided will likely differ from the approach for whole groups. This is due to the challenges of teaching pupils simultaneously at home and in school.

Our aim will still be to offer similar learning that the majority of the class will be receiving. This is to ensure that they have uninterrupted access to the same well planned and sequenced curriculum.

The tasks will be uploaded to Google Classroom and the activity adapted to suit this platform. A member of the year group team will check in to monitor your child's access and offer guidance and support and daily feedback.

You can call the school office or email your child's class teacher through the year group email with any questions.